

MATLAB® & Simulink® Student Version

Installation Instructions

R2012a

Also includes:

Control System Toolbox™
DSP System Toolbox™
Image Processing Toolbox™
Optimization Toolbox™
Signal Processing Toolbox™
Simulink® Control Design™
Statistics Toolbox™
Symbolic Math Toolbox™

MATLAB®
& SIMULINK®
STUDENT VERSION

How to Contact MathWorks



www.mathworks.com
comp.soft-sys.matlab

Web
Newsgroup



suggest@mathworks.com
bugs@mathworks.com
doc@mathworks.com
info@mathworks.com

Product enhancement suggestions
Bug reports
Documentation error reports
Sales, pricing, and general information



508-647-7000 (Phone)



The MathWorks, Inc.
3 Apple Hill Drive
Natick, MA 01760-2098

For localities outside the U.S., see the MathWorks Web site.

MATLAB® & Simulink® Student Version Installation Instructions

© COPYRIGHT 1984–2012 by The MathWorks, Inc.

The software described in this document is furnished under a license agreement. The software may be used or copied only under the terms of the license agreement. No part of this manual may be photocopied or reproduced in any form without prior written consent from The MathWorks, Inc.

FEDERAL ACQUISITION: This provision applies to all acquisitions of the Program and Documentation by, for, or through the federal government of the United States. By accepting delivery of the Program or Documentation, the government hereby agrees that this software or documentation qualifies as commercial computer software or commercial computer software documentation as such terms are used or defined in FAR 12.212, DFARS Part 227.72, and DFARS 252.227-7014. Accordingly, the terms and conditions of this Agreement and only those rights specified in this Agreement, shall pertain to and govern the use, modification, reproduction, release, performance, display, and disclosure of the Program and Documentation by the federal government (or other entity acquiring for or through the federal government) and shall supersede any conflicting contractual terms or conditions. If this License fails to meet the government's needs or is inconsistent in any respect with federal procurement law, the government agrees to return the Program and Documentation, unused, to The MathWorks, Inc.

Trademarks

MATLAB and Simulink are registered trademarks of The MathWorks, Inc. See www.mathworks.com/trademarks for a list of additional trademarks. Other product or brand names may be trademarks or registered trademarks of their respective holders.

Patents

MathWorks products are protected by one or more U.S. patents. Please see www.mathworks.com/patents for more information.

Revision History

April 2007	First printing	Rewritten for Release 2007a
March 2008	Online only	Release 2008a
October 2008	Online only	Release 2008b
March 2009	Online only	Release 2009a
March 2010	Online only	Release 2010a
April 2011	Online only	Release 2011a
March 2012	Online only	Release 2012a

Installation and Activation Instructions

1

System Requirements	1-2
Windows Systems	1-2
Macintosh Systems	1-3
Linux Systems	1-3
MEX-Files	1-4
Installing and Activating Student Version	1-5
Before You Begin	1-5
Installation Procedure	1-6
Activation Procedure	1-10
Starting MATLAB Student Version	1-31
Installing Additional Products	1-33
Mounting the DVD on Linux Systems	1-34

Index

Installation and Activation Instructions

You can download Student Version at http://www.mathworks.com/downloads/student_downloads, or request a Student Version DVD.

This chapter describes how to install and activate Student Version using the Student Version DVD:

- “System Requirements” on page 1-2
- “Installing and Activating Student Version” on page 1-5
- “Installing Additional Products” on page 1-33
- “Mounting the DVD on Linux Systems” on page 1-34

System Requirements

In this section...
“Windows Systems” on page 1-2
“Macintosh Systems” on page 1-3
“Linux Systems” on page 1-3
“MEX-Files” on page 1-4

Note For detailed and current information on system requirements, see <http://www.mathworks.com/support/sysreq/sv-r2012a/>.

Windows Systems

32-Bit MathWorks Products

Operating System	Processors	Disk Space	RAM
Windows® XP Service Pack 3	Any Intel® or AMD x86 processor supporting the SSE2 instruction set	1 GB (MATLAB® only)	1024 MB
Windows Server 2003 R2 with Service Pack 2		3-4 GB for a typical installation	(At least 2048 MB recommended)
Windows Vista™ Service Pack 2			
Windows Server 2008 Service Pack 2 or R2			
Windows 7			

Macintosh Systems

64-Bit MathWorks Products

Operating System	Processors	Disk Space	RAM
Mac OS X 10.7 (Lion)	All Intel based Macs	1 GB (MATLAB only)	1024 MB
Mac OS X 10.6.4 (Snow Leopard) and above with Apple Java for Mac OS X Update 2 and above		3-4 GB for a typical installation	(At least 2048 MB recommended)

Linux Systems

32-Bit MathWorks Products

Operating System	Processors	Disk Space	RAM
Qualified distributions*: Ubuntu 10.04 LTS, 11.04, and 11.10	Any Intel or AMD x86 processor supporting the SSE2 instruction set.	1 GB (MATLAB only)	1024 MB
Red Hat Enterprise Linux® 5.x or 6.x		3-4 GB for a typical installation	(At least 2048 MB recommended)
SUSE Linux Enterprise Desktop 11.x			
Debian 6.x			

MEX-Files

MEX-files are dynamically linked subroutines that MATLAB automatically loads and executes. MEX-files provide a mechanism by which you call your own C and Fortran subroutines from MATLAB as if they were built-in functions. To build your own MEX-files, you need a supported compiler.

For the most up-to-date information about compilers, see the support area at the MathWorks Web site (http://www.mathworks.com/support/sysreq/current_release/).

Installing and Activating Student Version

In this section...

- “Before You Begin” on page 1-5
- “Installation Procedure” on page 1-6
- “Activation Procedure” on page 1-10
- “Starting MATLAB Student Version” on page 1-31

Follow these instructions to install and activate the Student Version software on your computer.

Before You Begin

Before you run the installer:

- Exit any existing copies of MATLAB that you are running.
- Make sure you have your email address and your MathWorks Account password handy. You will need them to log in to your account during installation. If you don't have a MathWorks Account, you can create one during the installation and activation process.
- Make sure you have the correct permissions to perform the installation.
 - **Windows Systems** — You must have administrator privileges to install the software.
 - **Linux Systems** — Get the root password. You can install MATLAB software without superuser privileges, however, it limits certain installation options. For example, if you want to setup symbolic links to the `matlab` command, you must have root privileges.
 - **Macintosh Systems** — Get the name and password of the administrator account on your computer. The administrator account is the user account you set up when you configured your Macintosh system; this is not your MathWorks Account. During installation, you must enter this name and password in the Authenticate dialog box, shown below.



Installation Procedure

1 Start the installer by inserting the Student Version DVD into the DVD drive.

- **Windows Systems** — The installer should start automatically. If it doesn't, open the DVD in Windows Explorer. In the top-level folder on the DVD, double-click the MathWorks Installer, `setup.exe`.
- **Linux Systems** — In a terminal window, navigate to the top-level folder on the DVD and execute the following command:

```
./install &
```

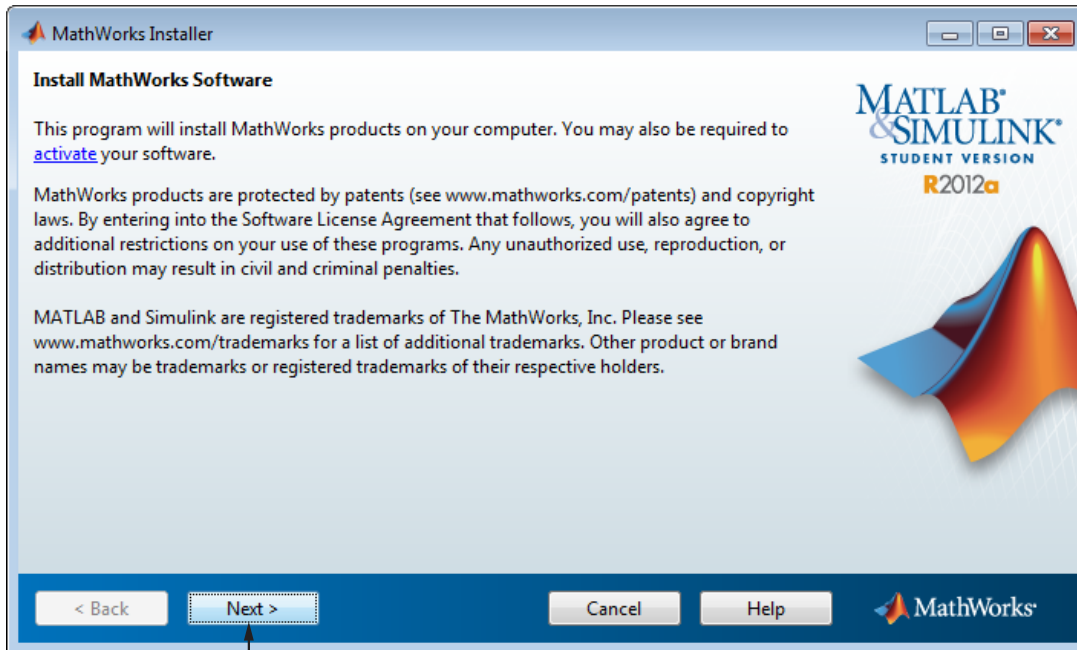
Depending on how your system is configured, you might have to mount the DVD first. Make sure you mount it with execute permissions, as in the following example. Note that the name of the DVD drive might be different on your system. For more information, see “Mounting the DVD on Linux Systems” on page 1-34.

```
mount -o exec /media/cdrom0
```

- **Macintosh Systems** — Double-click the DVD icon on your desktop to open the DVD and then double-click the `InstallForMacOSX` icon.



- 2 Read the information in the MathWorks Installer dialog box, and then click **Next**.



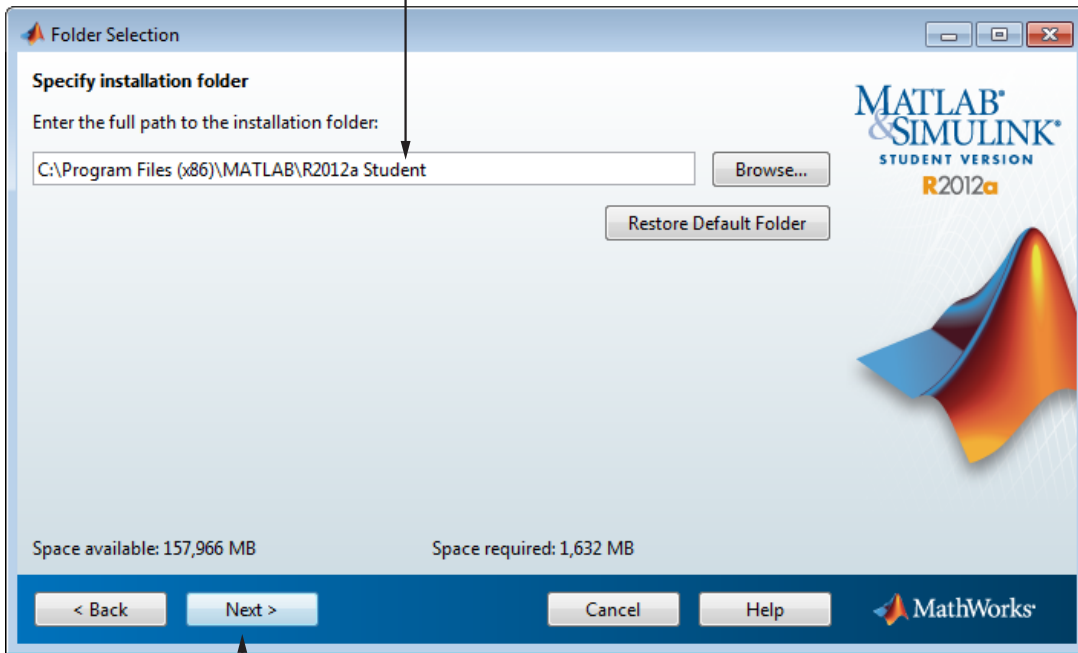
Click Next.

- 3 Review the software licensing agreement in the License Agreement dialog box and, if you agree with the terms, select **Yes** and click **Next**.
- 4 Select the type of installation you want to perform in the Installation Type dialog box: **Typical** or **Custom**. A typical installation installs all the licensed products. If you want to choose which products get installed, select the **Custom** option. After making your selection, click **Next**.

5 Specify the name of the folder where you want to install MathWorks® products in the Folder Selection dialog box. Accept the default folder, or specify another folder, and click **Next**. If the folder doesn't exist, the installer creates it. The default installation folder varies by platform:

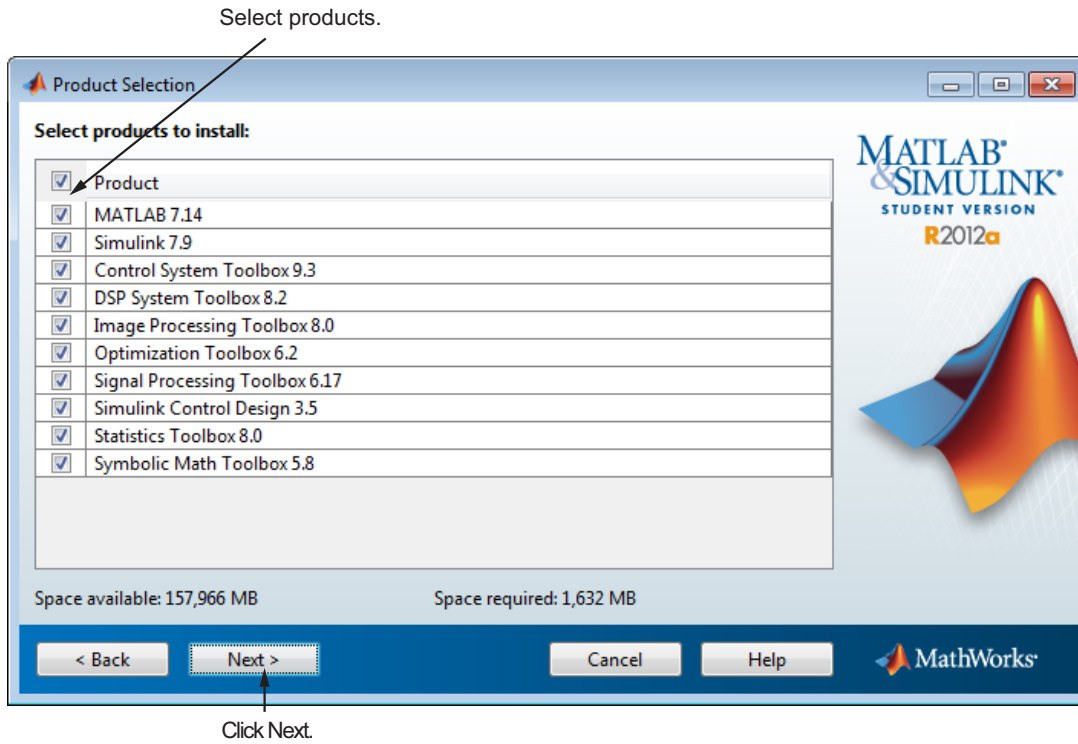
- Windows — C:\Program files\MATLAB\R2012a Student
- Macintosh — Applications/MATLAB_R2012a_Student.app
- Linux — /usr/local/MATLAB/R2012a_Student

Specify installation folder.



Click Next.

- 6 (Custom installation only) Select the products you want to install in the Product Selection dialog box, and click **Next**

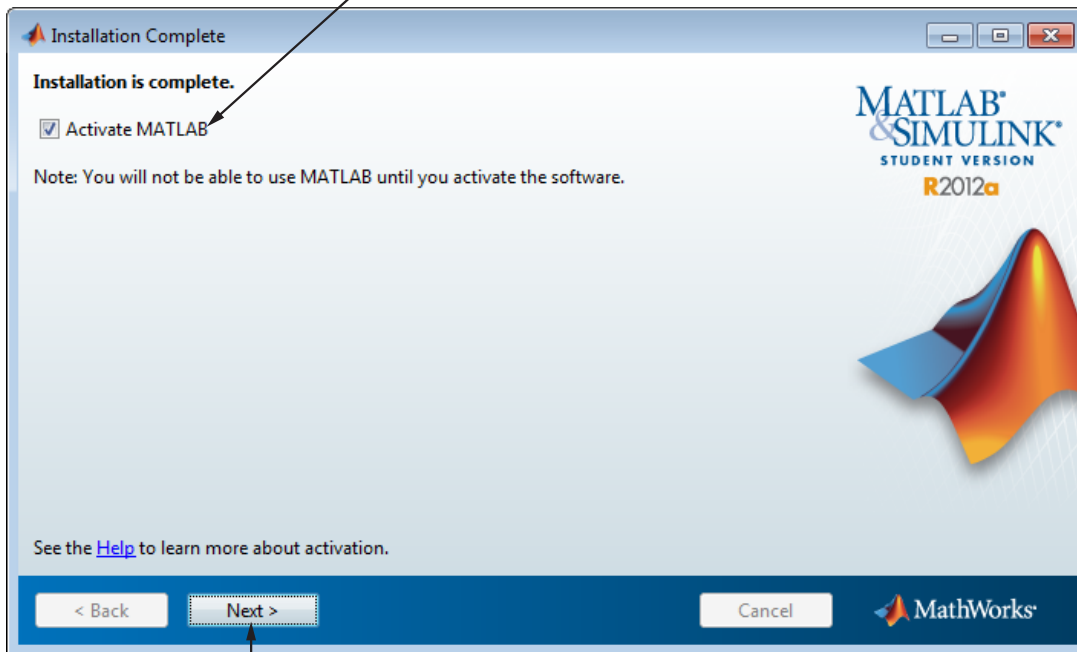


- 7 (Custom installation only) Specify additional installation options in the Installation Options dialog box. On Windows systems, you can specify whether you want the installer to put a shortcut to the MATLAB program on your desktop. On Linux systems, you can specify whether you want to create symbolic links to the MATLAB executable. After making your choices, click **Next**.
- 8 Review your installation choices in the Confirmation dialog box. To change a setting, click **Back**. To proceed with the installation, click **Install**.
- 9 When the installer is finished copying files to your system, it displays the Installation Complete dialog box. Choose whether to activate the software you just installed. MathWorks recommends activating immediately after

installation because you cannot use the software you installed until you activate it.

- To proceed with activation, click **Next**.
- To exit the installer without performing activation, clear the **Activate MATLAB** option and click **Finish** (the button label changes). You can activate later.

Leave this option selected to proceed to activation.



Click Next.

Activation Procedure

Perform this procedure to activate the software you just installed. You cannot use the software until you activate it.

Note To use this procedure to activate the software, you must be connected to the Internet. If you are not connected to the Internet, see “When You Don’t Have an Internet Connection” on page 1-21.

- 1** Start the activation application. If you left the **Activate MATLAB** option selected on the Installation Complete dialog box, the activation application starts automatically. Other ways to start the application include:
 - Start MATLAB Student Version. If it needs to be activated, MATLAB starts the activation application.
 - Navigate to the `matlabroot/bin/$ARCH` folder and launch the `activate_matlab.exe` program (`activate_matlab.sh` on Linux systems).
- 2** Read about the activation process in the Activation Overview dialog box. *Activation* is the process that verifies licensed use of MathWorks products. This process validates the license and ensures that it is not used on more computers or by more users than allowed by the license option you have acquired.

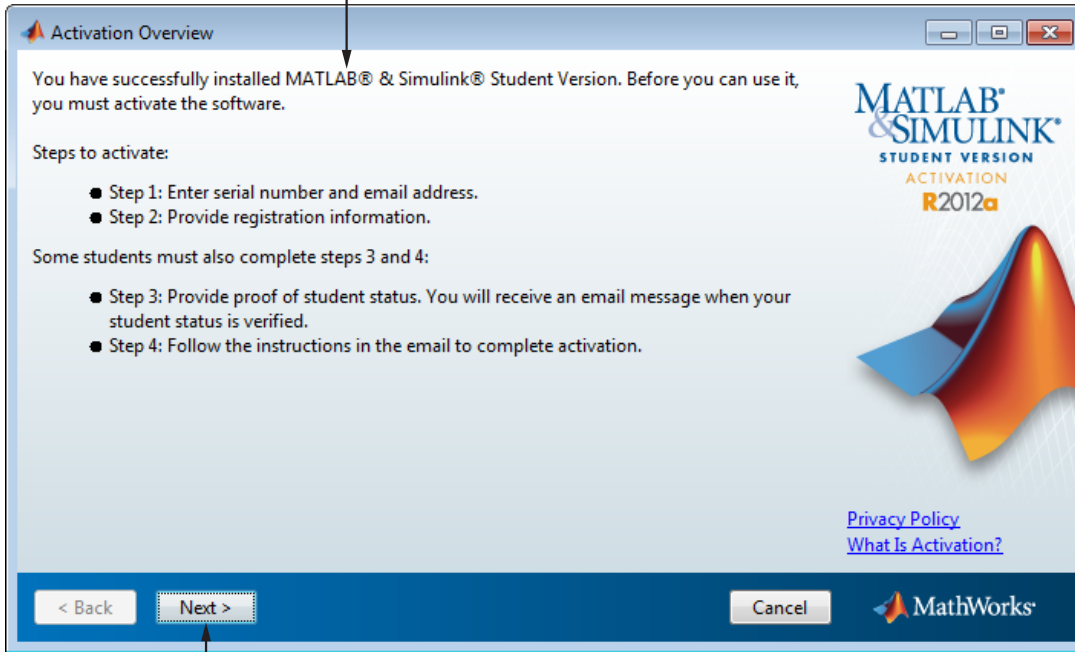
In most cases, activation is a two-step process:

- Enter the product serial number and your email address.
- Provide other registration information.

You might also be required to provide proof of your student status. You can upload a digital image of your proof during activation, or provide it later. In this case, the software is only temporarily activated. To complete activation, check for an email from MathWorks indicating that your student status has been authenticated and follow the instructions in that email.

To proceed with activation, click **Next**.

Read this information about activation.



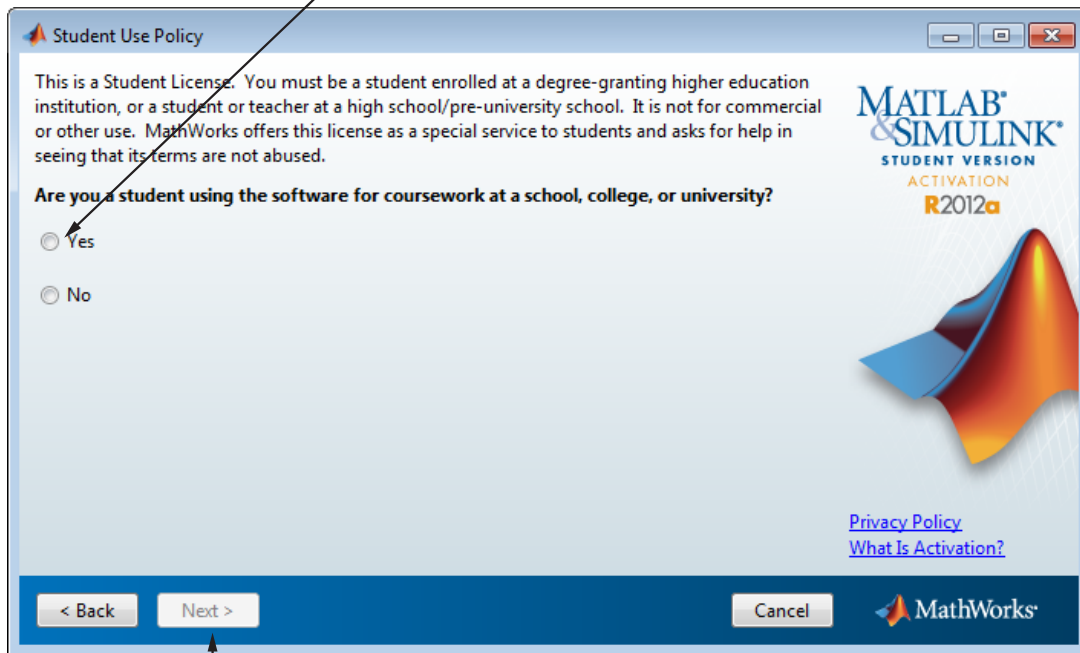
Click Next.

Note If you encounter a problem during the activation process, check http://www.mathworks.com/academia/student_version/faq/index.html for more information.

3 Verify that you are a student in the Student Use Policy dialog box:

- Select **Yes** if you are a student using the software for course work at a school, college, or university, and click **Next** to proceed with activation.
- Select **No** if you are not a student, and then click **Cancel**. You cannot use this software if you do not fit the description presented in this dialog box.

If you are a student, click Yes.



Click Next.

- 4 Enter the product serial number and your email address in the Serial Number and Email Address dialog box, and click **Next**.

Enter serial number and your e-mail address.

Serial Number and Email Address

Step 1: Enter the product serial number and your email address.

Serial number : 5555 - 5555 - 5555 - 5555 - 5555

The serial number is included on a label on the DVD package, or in an order confirmation email from service@mathworks.com.

Email : jstudent@mycollege.edu

Your email will retrieve an existing [MathWorks account](#) or create a new account.

This information, along with your machine ID (DISK_SERIAL_NUM=fc66c648), will be sent to MathWorks.

[Privacy Policy](#)
[What Is Activation?](#)

< Back Next > Cancel

MathWorks

Click Next.

- 5 Specify your MathWorks account password in the Account Password dialog box and click **Next**.

Specify your account password.

Account Password

Step 2: Enter MathWorks account password to start registration.

You have an existing [MathWorks account](#). Enter your password below.

E-mail:

Password:

[I forgot my password](#)

[Privacy Policy](#)
[What Is Activation?](#)

< Back Next > Cancel MathWorks

Click Next.

If you do not have a MathWorks account, the activation application creates one for you. In this case, specify the password that you want to use with your account in the Create Account dialog box, and click **Next**.

Specify a password to use with your MathWorks account.

The screenshot shows a window titled "Create Account" with the following content:

- Step 2: Create MathWorks account to register.**
- A [MathWorks account](#) will be created for you with the email address and password below.
- Email:
- Password:
- Retype password:

On the right side of the window, there is a logo for "MATLAB & SIMULINK STUDENT VERSION ACTIVATION R2012a" and a 3D surface plot. Below the logo are links for "Privacy Policy" and "What Is Activation?". At the bottom of the window, there are three buttons: "< Back", "Next >", and "Cancel". The MathWorks logo is also present in the bottom right corner.

Click Next.

- 6 Provide information about yourself in the Registration Information dialog box and click **Send** to send the information to MathWorks.

Provide registration information.

Registration Information

Step 2 (continued): Provide the following information to register the software.

First name: Jane

Middle name (optional): Q

Last name: Student

School/University: My College

School country location: United States

Student type: Master's

Field of study: Aerospace & Astronautical Engineering

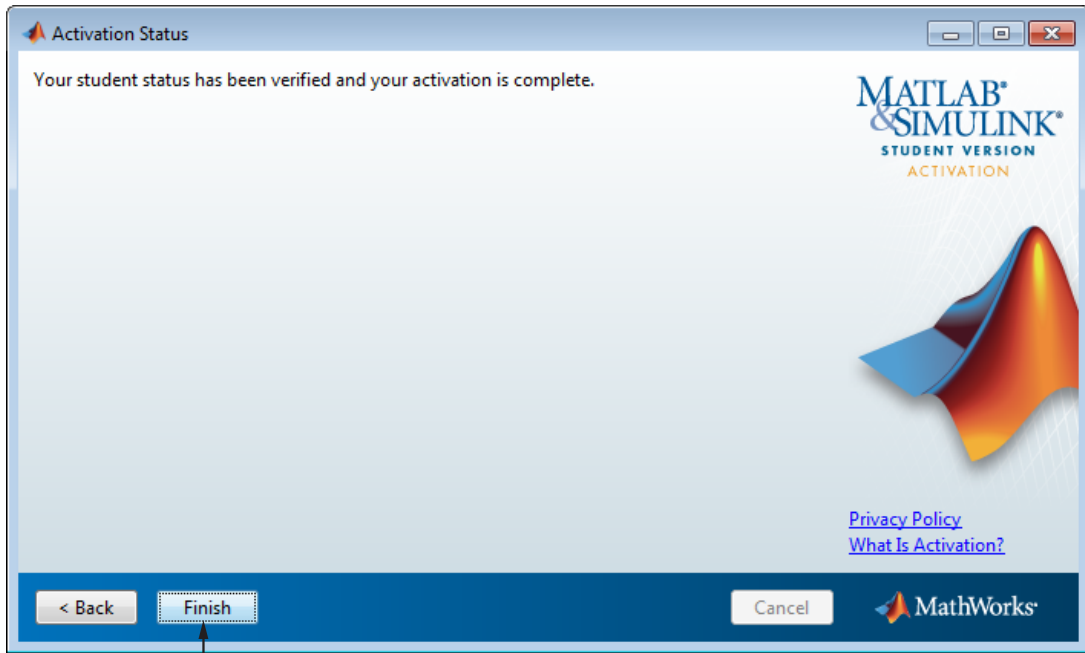
Year of Graduation: 2014

Privacy Policy
What Is Activation?

< Back Send > Cancel MathWorks

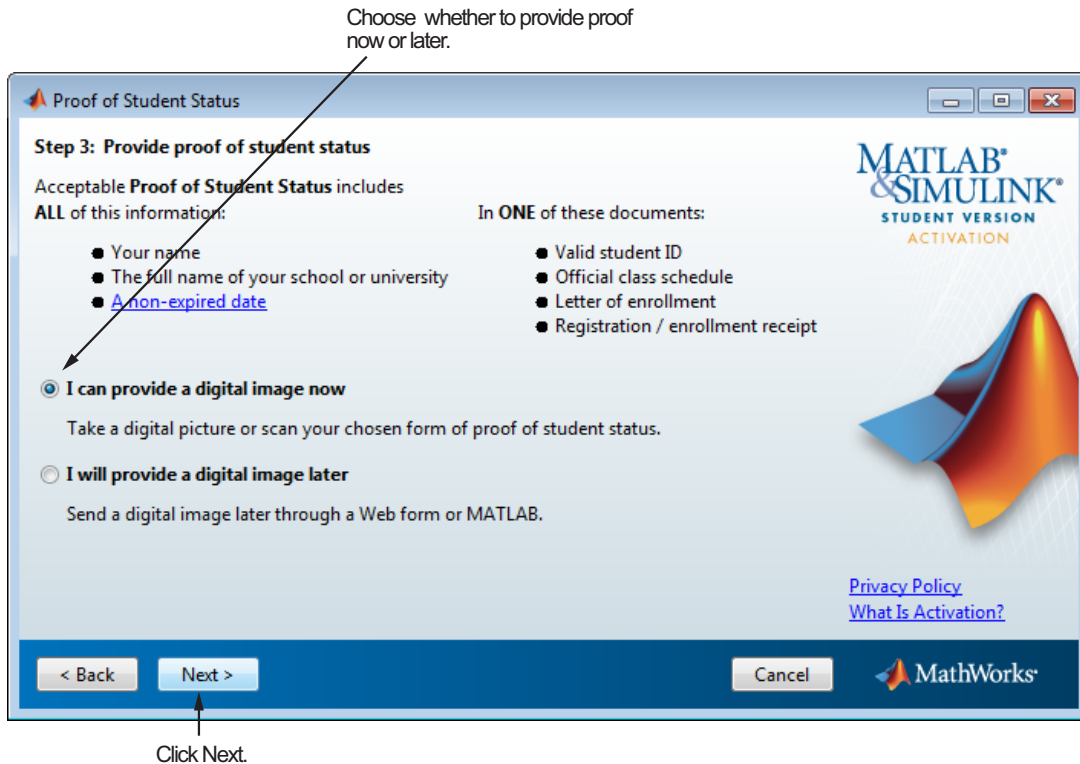
Click Send.

Note If MathWorks already has proof of your student status, sending registration information completes the activation process. The activation application displays the following Activation Status dialog box. Click **Finish** to exit the activation application and begin using the software. If you need to provide proof of student status, the activation application continues—see Step 7.



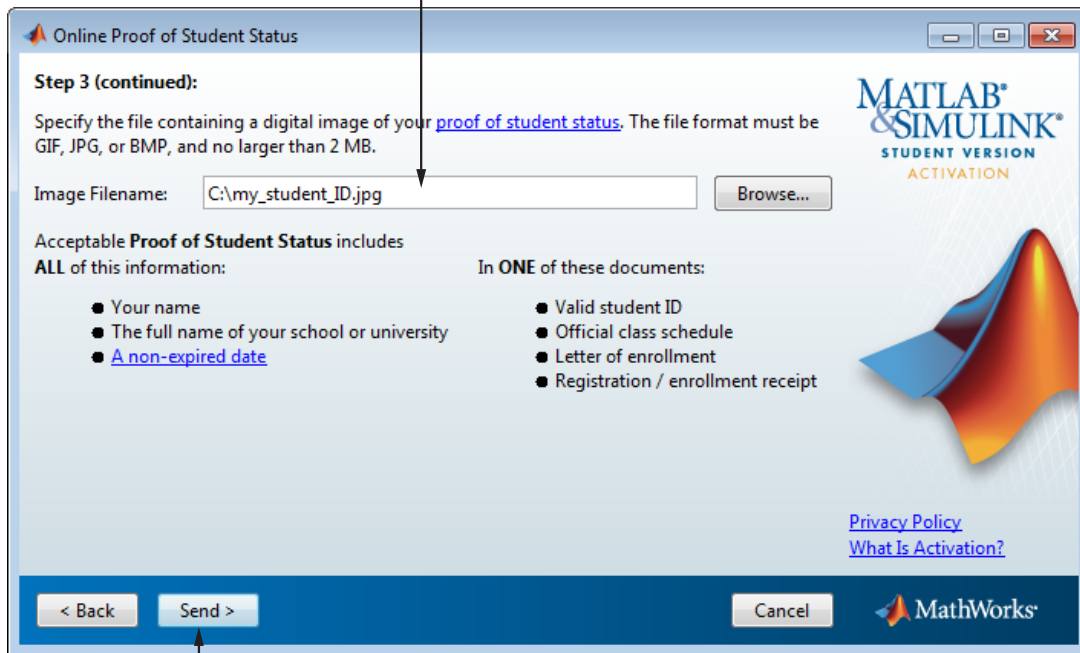
Click Finish.

- 7 If you need to provide proof of student status, the activation application displays the Proof of Student Status dialog box. If you have a digital image of your proof, select the **I can provide a digital image now** option and click **Next** to upload it. If you cannot provide proof of student status at this time, select **I will provide a digital image later** and click **Next**.



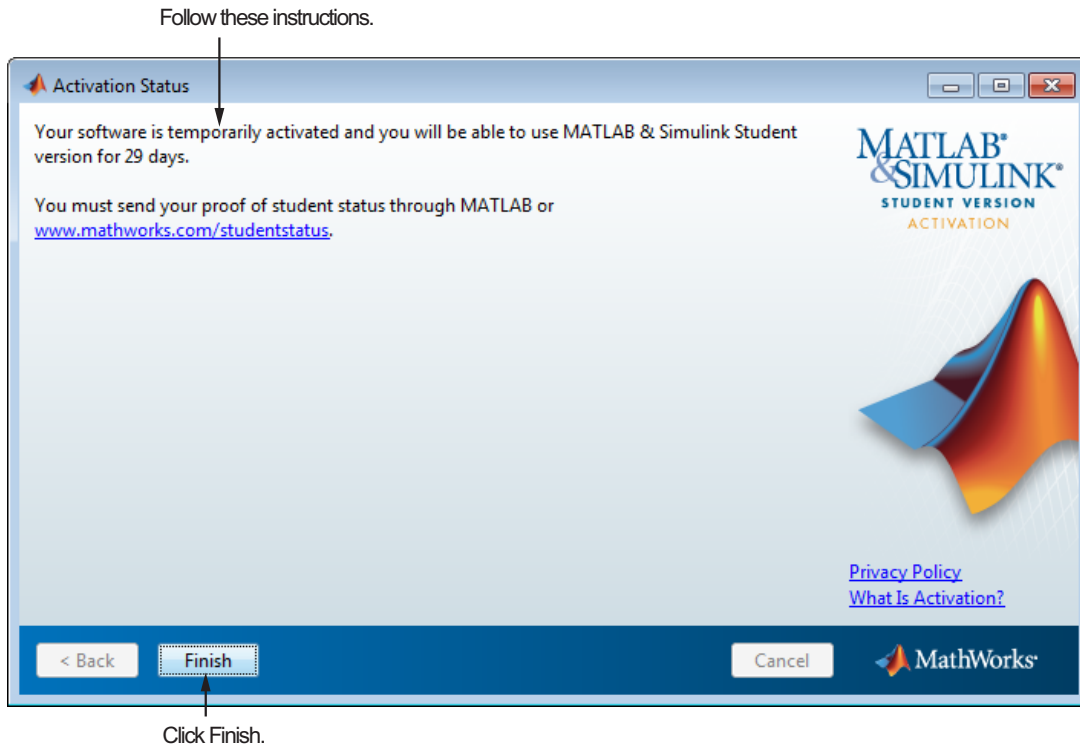
If you chose the **I can provide a digital image now** option, the activation application displays the Online Proof of Student Status dialog box. Specify the file name of the digital image of your proof of student status and click **Send** to send it to MathWorks.

Specify your student status image file.



Click Send.

- 8 If you were required to provide proof of your student status, the activation process ends by temporarily activating the software. Click **Finish** in the Activation Status dialog box to exit the activation application and begin using the software. To complete activation, check for an email from MathWorks indicating that your student status has been authenticated and follow the instructions in that email.



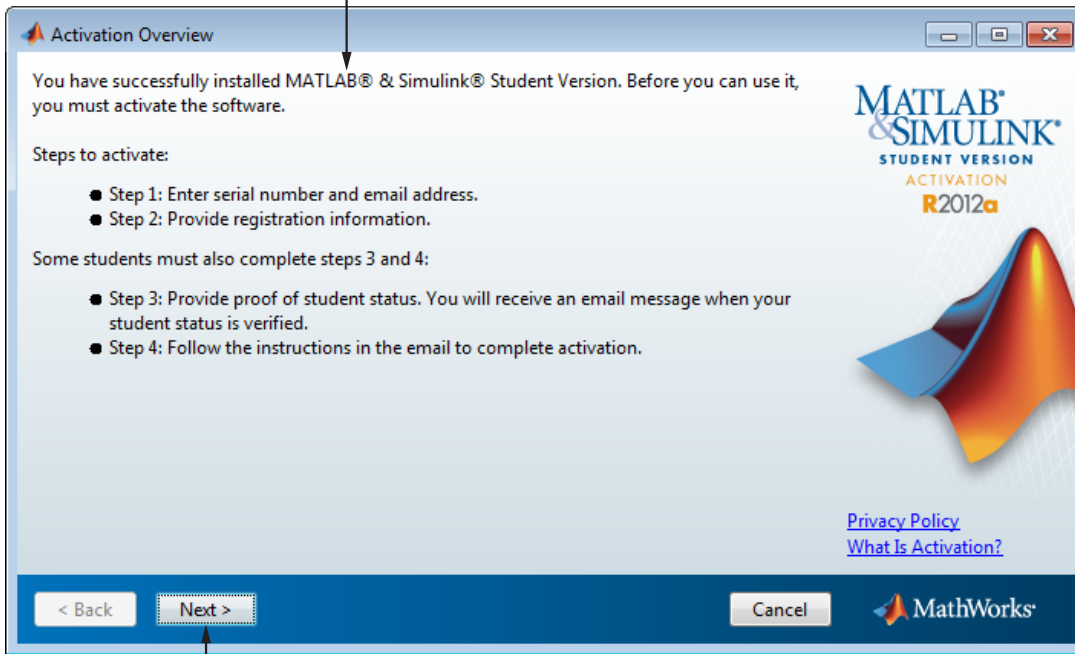
When You Don't Have an Internet Connection

To activate your software using the activation application, you must be connected to the Internet. If you are not connected to the Internet, you can still run the activation application. In this case, the application provides you with all the information you will need to activate the software later, when you can log in to a computer with an Internet connection. Follow this procedure to get this information and print it.

- 1 Start the activation application. If you left the Activate MATLAB option selected on the Installation Complete dialog box, the activation application starts automatically. Other ways to start the application include:
 - Start MATLAB Student Version. If it needs to be activated, MATLAB starts the activation application.
 - Navigate to the `matlabroot/bin/$ARCH` folder and launch the `activate_matlab.exe` program (`activate_matlab.sh` on Linux systems).
- 2 Read about the activation process in the Activation Overview dialog box. *Activation* is the process that verifies licensed use of MathWorks products. This process validates the license and ensures that it is not used on more computers or by more users than allowed by the license option you have acquired.

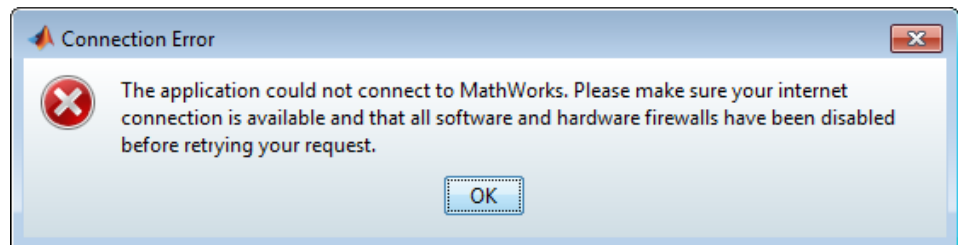
To proceed with activation, click **Next**.

Read this information about activation.



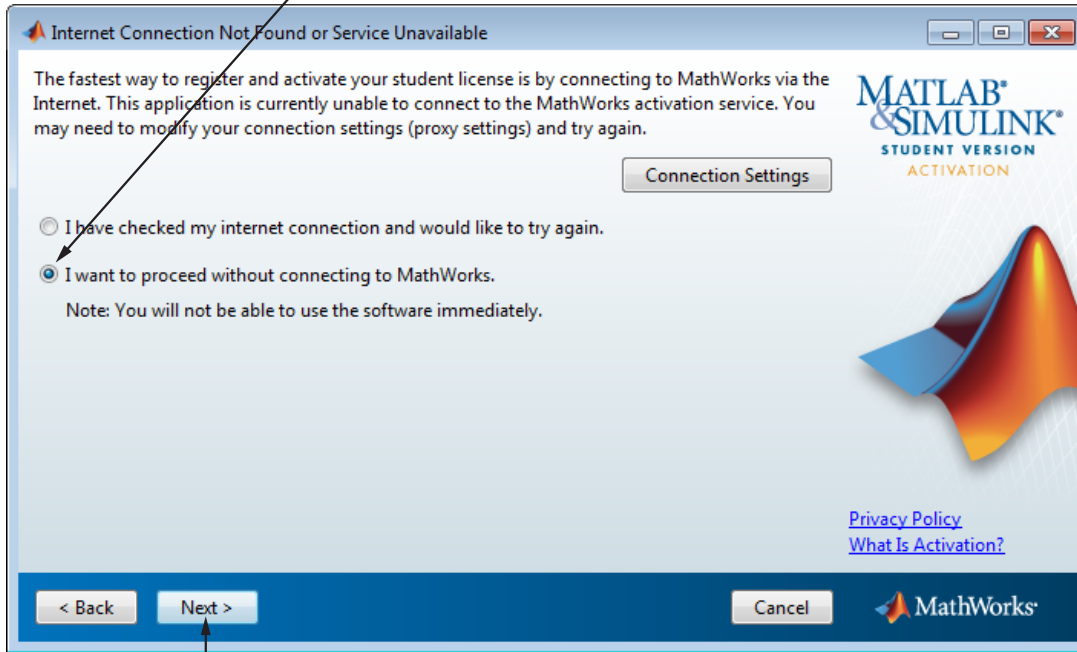
Click Next.

If the activation application cannot connect with MathWorks, it displays the Connection Error dialog box. Click **OK** to continue.



3 Choose to the **I want to proceed without connecting to MathWorks** option and click **Next**.

Select this option to proceed with activation.

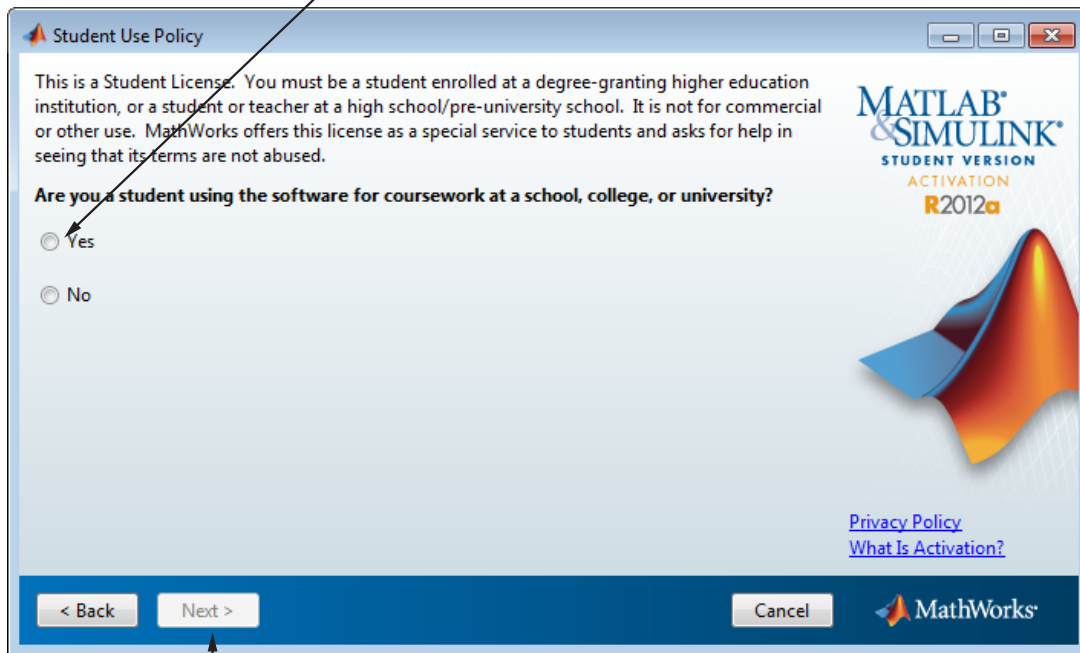


Click Next.

4 Verify that you are a student in the Student Use Policy dialog box:

- Select **Yes** if you are a student using the software for course work at a school, college, or university, and click **Next** to proceed with activation.
- Select **No** if you are not a student, and then click **Cancel**. You cannot use this software if you do not fit the description presented in this dialog box.

If you are a student, click Yes.



Click Next.

- 5 Enter the product serial number and your email address in the Serial Number and Email Address dialog box, and click **Next**.

Enter serial number and your e-mail address.

Serial Number and Email Address

Step 1: Enter the product serial number and your email address.

Serial number :

The serial number is included on a label on the DVD package, or in an order confirmation email from service@mathworks.com.

Email :

Your email will retrieve an existing [MathWorks account](#) or create a new account.

This information, along with your machine ID (DISK_SERIAL_NUM=fc66c648), will be sent to MathWorks.

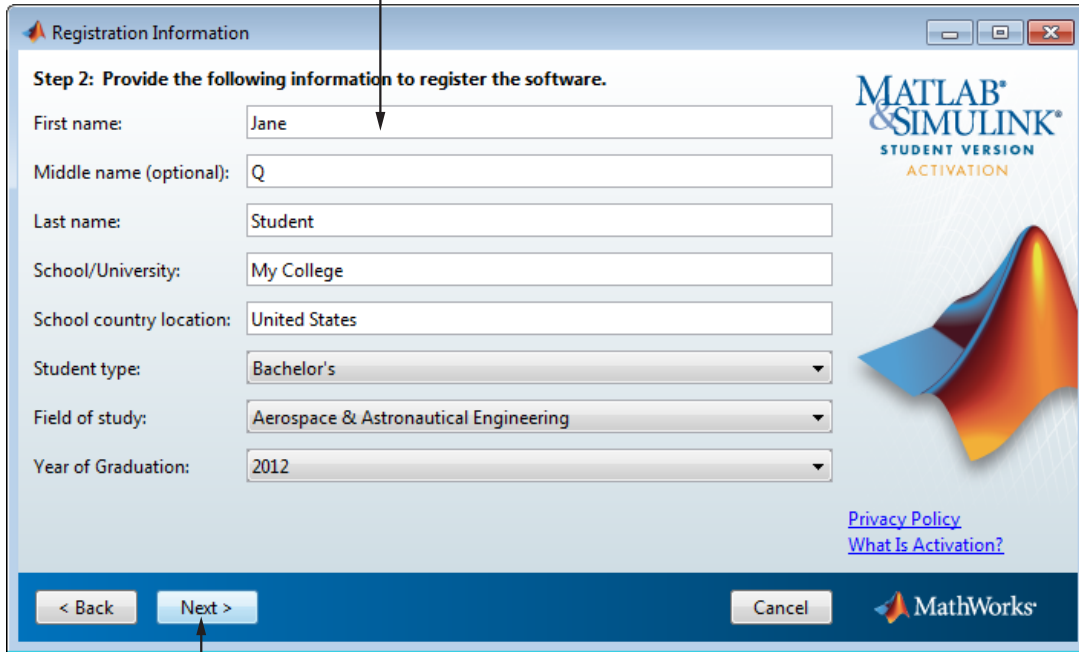
[Privacy Policy](#)
[What Is Activation?](#)

MathWorks

Click Next.

- 6 Provide information about yourself in the Registration Information dialog box and click **Next**.

Enter required information.



The image shows a Windows-style dialog box titled "Registration Information". The dialog has a blue header bar with the title and standard window controls (minimize, maximize, close). Below the header, the text "Step 2: Provide the following information to register the software." is displayed. The form contains several input fields and dropdown menus:

- First name: Jane
- Middle name (optional): Q
- Last name: Student
- School/University: My College
- School country location: United States
- Student type: Bachelor's (dropdown menu)
- Field of study: Aerospace & Astronautical Engineering (dropdown menu)
- Year of Graduation: 2012 (dropdown menu)

On the right side of the dialog, there is the "MATLAB & SIMULINK STUDENT VERSION ACTIVATION" logo and a 3D surface plot graphic. Below the logo are two links: "Privacy Policy" and "What Is Activation?". At the bottom of the dialog, there are three buttons: "< Back", "Next >", and "Cancel". The "Next >" button is highlighted with a blue background. The MathWorks logo is in the bottom right corner.

Click Next.

- 7 Click **Print** to get a copy of all the information you will need to activate the software when you visit a computer with an Internet connection and then click **Next**.

Print this information to help you activate later.

Send Proof of Student Status

Step 3: Register and activate software at the MathWorks Web site.
Use the information below to create your MathWorks Account and register your software.

MATLAB & Simulink Student Version Software

Registration and Proof of Student Status Instructions

To activate your Student Version software:

1. Create a digital image of your proof of student status.
2. Upload the image at www.mathworks.com/studentactivation.

You will be contacted within three business days after we receive your information.

Acceptable proof of student status includes:

ALL of this information:

- Your name
- The full name of your school or university
- A non-expired date

In ONE of these documents:

- Valid student ID card
- Official class schedule
- Letter of enrollment on school or university letterhead
- Registration / enrollment receipt from your school or university

Student Information for MathWorks

First name: Jane

Middle name:

Last name: Student

E-mail: jstudent@mycollege.edu

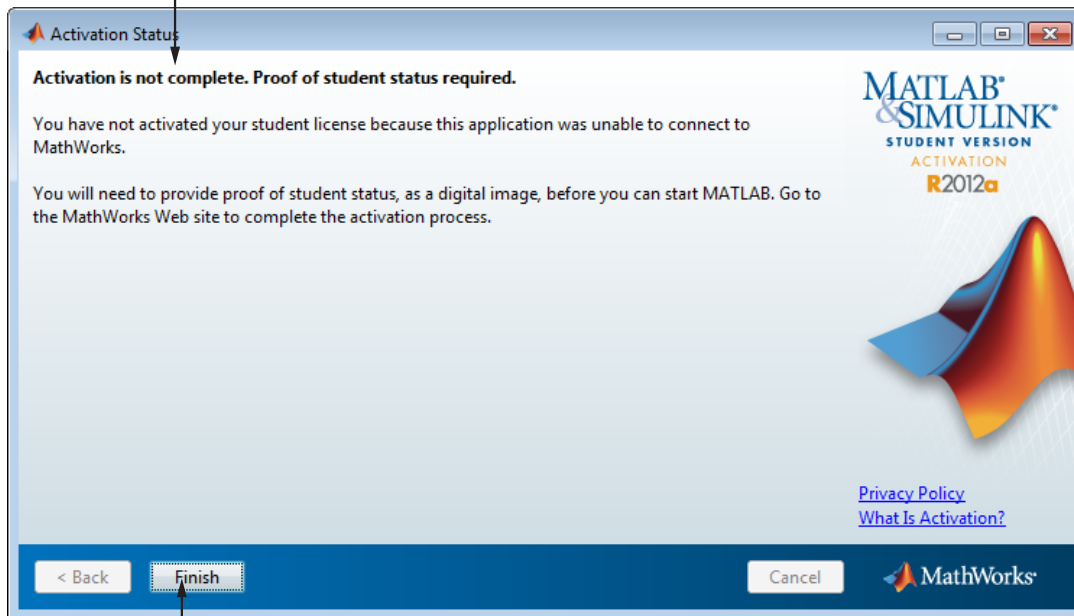
[Privacy Policy](#)
[What Is Activation?](#)

< Back Print Next > Cancel MathWorks

Click Print. Click Next.

- 8 Click **Finish** to exit the activation application. Without an Internet connection, you cannot activate the software. Bring the information you printed out to a computer with an Internet connection and complete activation there.

Note that the software is not activated.



Click Finish.

Starting MATLAB Student Version

There are several ways to start MATLAB, double-click the MATLAB icon that the installer creates on your desktop.

Customize any MATLAB environment options, if desired. For example, to specify welcome messages, default definitions, or any MATLAB expressions that you want executed every time you invoke MATLAB, you must create a file named `startup.m`. For Windows XP operating system, create `startup.m` in the `My Documents\MATLAB` folder. For other supported Windows platforms, create `startup.m` in the `Documents\MATLAB` folder. Every time you start MATLAB, it executes the commands in the `startup.m` file.

Perform any additional configuration by typing the appropriate command at the MATLAB command prompt. For example, to configure the MATLAB Notebook, type `notebook -setup`. To configure a compiler to work with the MATLAB External Interface, type `mex -setup`.

The method you use to start MATLAB software depends on your platform.

- **Windows Systems:**

- On Windows 7 systems, click the Windows Start menu, and click **MATLAB R2012a Student Version**.
- On Windows XP systems, click the Windows **Start** menu, and then select **Programs > MATLAB > R2012a**, and click **MATLAB R2012a**.
- If you chose to create a shortcut on your desktop in the Installation Options dialog box, you can double-click the MATLAB icon.



- Navigate to `matlabroot/bin`, where `matlabroot` is your MATLAB installation folder, and double-click `matlab.exe`.

- **Linux Systems**

- Enter the `matlab` command at the system prompt. If you did not set up symbolic links on the Installation Options dialog box during installation, you must enter the full path name, `matlabroot/bin/matlab`, where `matlabroot` is the name of your MATLAB installation folder.
- **Macintosh Systems**
 - Navigate to your installation folder and double-click the MATLAB icon.



Installing Additional Products

To purchase and install additional products, go to the MathWorks Store at www.mathworks.com/store. After you purchase a product, you can download the product and its online documentation to your computer.

When you download a product, you receive an installation program for the product. To install the product and its documentation, run the installation program by double-clicking the installer icon. After you successfully install the product, all of its functionality and documentation are available to you when you start MATLAB.

Mounting the DVD on Linux Systems

On Linux systems, if your DVD drive is not accessible to your operating system, mount the DVD drive on your system.

Create a folder to be the mount point for it:

```
$ mkdir /dvd
```

Mount a DVD drive using the command:

```
$ mount /dvd
```

If your system requires that you have root privileges to mount a DVD drive, these commands work on most systems:

```
$ su root  
# mount -t iso9660 /dev/dvd /dvd
```

To enable nonroot users to mount a DVD drive, include the `exec` option in the entry for DVD drives in your `/etc/fstab` file, as in the following example:

```
/dev/dvd /dvd iso9660 noauto,ro,user,exec 0 0
```

This option is often omitted from the `/etc/fstab` file for security reasons.

A

- activating Student Version
 - on Linux 1-5
 - on Windows 1-5
- additional products
 - installing on Windows 1-33

C

- configuring additional products
 - on Windows 1-33

E

- environment options 1-31

I

- installing additional products
 - on Windows 1-33
- installing Student Version
 - on Linux 1-5
 - on Mac 1-3
 - on Windows 1-5

L

- Linux
 - activating Student Version 1-5
 - installing Student Version 1-5

M

- Mac
 - activating Student Version 1-3
 - installing Student Version 1-3
- Macintosh computers 1-3
- MATLAB
 - calling C subroutine on Linux 1-4
 - calling C subroutine on Mac 1-4
 - calling C subroutine on Windows 1-4

- calling Fortran subroutine on Linux 1-4
- calling Fortran subroutine on Mac 1-4
- calling Fortran subroutine on Windows 1-4
 - starting 1-31 to 1-32

MEX-file

- Linux 1-4
- Mac 1-4
- supported Linux compilers 1-4
- supported Mac compilers 1-4
- Windows 1-4

R

- requirements, system
 - for Linux operating systems 1-3
 - for Mac computers 1-3
 - for Windows platforms 1-2

S

- shortcut
 - MATLAB shortcut on desktop 1-31
- starting MATLAB 1-31
- startup.m file
 - Windows 1-31
- Student Version
 - installing on Linux 1-5
 - installing on Mac 1-3
 - installing on Windows 1-5
- system requirements
 - for Linux operating systems 1-3
 - for Mac computers 1-3
 - for Windows platforms 1-2

W

- Windows
 - activating Student Version 1-5
 - installing Student Version 1-5